

Edge AI 360-degree fisheye camera that provides video surveillance without any blind spots and business intelligence.

## 12MP Sensor Indoor 360 Fisheye Network Camera with AI engine

The new S-series fisheye camera is a new-generation camera equipped with an AI processor that realizes edge AI processing. With a high-performance fisheye lens and our own video compression technology, it is possible to clearly shoot 360 degrees in all directions up to the periphery of the screen with a single camera.

The camera is equipped with an AI processor, and contribute to solve various problems by installing an AI application according to the purpose.

It is possible to visualize the number of people and the congestion status with a dashboard that can be customized according to the customer's operation style, and use it for business intelligence purposes.

### Key features

- The AI processor equipped with a camera realizes motion detection of people / vehicles, number counting, and congestion detection. It also supports third-party AI applications and can meet a variety of AI demands. The data aggregated inside the camera can be visualized on the dashboard in cooperation with our system, and can be used for marketing and business intelligence.
- Equipped with industry standard protocols such as ONVIF, it can be linked with third-party display software as an IoT terminal for sensor networks. Furthermore, it is possible to integrate and utilize it in another system customized according to the customer's operation.
- Equipped with a high-performance fisheye lens that has been well-established in the market, one camera can clearly shoot 360 ° in all directions up to the periphery of the screen.
- Our original smart coding compatible with H.264 and H.265 delivers high-resolution video at high image quality and low bit rate. Achieved useful images by combining with highly visible images by the intelligent auto (iA) function.



2992 x 2992  
4000 x 3000

### Key i-PRO Spec.

- 12MP Sensor
- 2992x2992 pixel fisheye image up to 30fps
- Intelligent Auto (with AI Engine)
- Smart Coding (with AI Engine)
- ONVIF® Profile G / M / S / T

\*ONVIF is a trademark of ONVIF, Inc.

### Industry examples

- Transportation (Airport / Subway station)
- Logistics / Factory
- Education / Hospital
- Retail / Bank
- Building



## Specifications

|                    |   |   |
|--------------------|---|---|
| <b>Camera</b>      | Image Sensor  | Approx. 1/2 type 12MP CMOS image sensor   |
|                    | Minimum Illumination                                    | Color : 0.3 lx, BW : 0.2 lx<br>(F1.9, Maximum shutter : Off (1/30 s), AGC : 11)<br>Color : 0.02 lx, BW : 0.01 lx<br>(F1.9, Maximum shutter : max. 16/30s, AGC : 11) *1  |
|                    | Intelligent Auto  | On / Off  |
|                    | Maximum shutter   | Max. 16/30s to Max. 1/10000s  |
|                    | Wide Dynamic Range <sup>2</sup>                         | On / Off, The level can be set in the range of 0 to 31.   |
|                    | Dynamic Range   | Max. 84 dB (Wide Dynamic Range : On, Level: 31)   |
|                    | Image Settings  | Gain (AGC), White balance   |
|                    | Image Compensation                                      | Adaptive black stretch, Back light compensation (BLC), Fog compensation, High light compensation (HLC), Digital noise reduction   |
|                    | Day / Night (Electrical)                                | Off / Auto  |
|                    | Video Motion Detection (VMD)                            | On / Off, 4 areas available   |
|                    | Scene Change Detection (SCD)                            | On / Off, 1 areas available   |
|                    | Audio Detection   | On / Off  |
|                    | AI Sound Classification                                 | Gunshot, Yell, Vehicle horn, Glass break  |
|                    | AI Analytics  | Yes   |
|                    | Privacy Zone  | On / Off, Up to 8 zones available   |
|                    | Camera Title (OSD)                                      | On / Off, Up to 20 characters (alphanumeric characters, marks)  |
|                    | Fixing angle adjustment                                 | -5°, 0°, +5°  |
| <b>Lens</b>        | Zoom Ratio  | 1x  |
|                    | Digital (electronic) zoom                               | Choose from 3 levels of x1, x2, x4  |
|                    | Focal length  | 1.4 mm {1/16 inches}  |
|                    | Maximum Aperture Ratio                                  | 1 : 1.9   |
|                    | Focus range   | 0.5 m (19-11/16 inches) - ∞   |
| <b>DORI</b>        | Distance to the object in the center of the image       | Detect (25 ppm / 8 ppf) : 29.9 m / 98.2 ft  |
|                    |   | Observe (62.5 ppm / 19 ppf) : 12.0 m / 39.3 ft  |
|                    |   | Recognize (125 ppm / 38 ppf) : 6.0 m / 19.6 ft  |
|                    | Coverage radius when mounted at a height of 3 m (10 ft) | Identify (250 ppm / 76 ppf) : 3.0 m / 9.8 ft  |
|                    |   | Detect (25 ppm / 8 ppf) : 56.1 m / 184.2 ft   |
| <b>Browser GUI</b> | Camera Control  | Brightness, AUX On / Off  |
|                    | Audio   | Mic (Line) Input : On / Off Volume adjustment : Low / Middle / High<br>Audio Output : On / Off Volume adjustment : Low / Middle / High  |
|                    | GUI / Setup Menu Language                               | English, Italian, French, German, Spanish, Portuguese, Russian, Chinese, Japanese   |
|                    | Network IF  | 10Base-T / 100Base-TX, RJ45 connector   |
|                    | Resolution  | <Ceiling> • <b>Fisheye mode (max. 30 fps/25 fps)</b><br>2992×2992 / 2192×2192 / 1280×1280 / 640×640 / 320×320<br>• <b>Quad PTZ mode (max. 15 fps/12.5 fps)</b><br>2560×1920 <sup>3</sup> / 2048×1536 / 1600×1200 / 1280×960 / 800×600 / VGA / QVGA<br><Ceiling> • <b>Double Panorama mode (max. 15 fps/12.5 fps)</b><br>2560×1440 / 1920×1080 / 1280×720 / 640×360 / 320×180<br>• <b>Fisheye + Double Panorama mode (max. 15 fps/12.5 fps)</b><br>(Fisheye) 2992×2992 / 2192×2192 / 1280×1280 / 640×640 / 320×320<br>(Double Panorama) 1280×720 / 640×360 / 320×180<br>• <b>Fisheye + Quad PTZ mode (max. 15 fps/12.5 fps)</b><br>(Fisheye) 2992×2992 / 2192×2192 / 1280×1280 / 640×640 / 320×320<br>(Quad PTZ) 1280×960 / 800×600 / VGA / QVGA<br>• <b>Quad streams mode</b><br>(Single PTZ (Quad streams)) 1280×960 / 800×600 / VGA / QVGA (max. 15 fps/12.5 fps)<br>(Quad PTZ) 2560×1920 / 2048×1536 / 1600×1200 / 1280×960 / 800×600 / VGA / QVGA (max. 5 fps)<br><Wall> • <b>Panorama mode (max. 15 fps/12.5 fps)</b><br>2560×1440 / 1920×1080 / 1280×720 / 640×360 / 320×180<br>• <b>Fisheye + Panorama mode (max. 15 fps/12.5 fps)</b><br>(Fisheye) 2992×2992 / 2192×2192 / 1280×1280 / 640×640 / 320×320<br>(Panorama) 1280×720 / 640×360 / 320×180 |

|                                    |                                  |   |   |
|------------------------------------|----------------------------------|---|---|
| <b>Network</b>                     | H.265/ H.264 <sup>4</sup>        | Transmission Mode   | Constant bit rate / VBR / Frame rate / Best effort  |
|                                    | JPEG                             | Transmission Type   | Unicast port (AUTO) / Unicast port (MANUAL) / Multicast   |
|                                    | Smart Coding                     | Image Quality   | 10 steps  |
|                                    | Audio Compression                | GOP (Group of pictures) control :   | On (Frame rate control)* / On (Advanced)* / On (Mid) / On (Low) / Off<br>*On (Frame rate control) and On (Advanced) are only available with H.265.<br><b>Auto VQIS : On / Off</b>   |
|                                    | Supported Protocol               | G.726 (ADPCM) : 16 kbps / 32 kbps<br>G.711 : 64 kbps<br>AAC-LC <sup>5</sup> : 64 kbps / 96 kbps / 128 kbps                              | IPV6 : TCP/IP, UDP/IP, HTTP, HTTPS, SSL/TLS, SMTP, DNS, NTP, SNMP v1/v2/v3, DHCPv6, RTP, MLD, ICMP, ARP, IEEE 802.1X, DiffServ<br>IPV4 : TCP/IP, UDP/IP, HTTP, HTTPS, SSL/TLS, RTSP, RTP, RTCP, SMTP, DHCP, DNS, DDNS, NTP, SNMP v1/v2/v3, UPnP, IGMP, ICMP, ARP, IEEE 802.1X, DiffServ, SRTP   |
|                                    | Maximum concurrent access number | SDXC/SDHC/SD Memory Card  | Up to 14 users (Depends on network conditions)<br>H.265 / H.264 recording :<br>Manual REC / Alarm REC (Pre/Post) / Schedule REC<br>JPEG recording :<br>Manual REC / Alarm REC (Pre/Post)<br>Compatible SDXC/SDHC/SD card :<br>2 GB, 4 GB*, 8 GB*, 16 GB*, 32 GB*, 64 GB**, 128 GB**, 256 GB**, 512 GB** model<br>*SDHC card, ** SDXC card (except miniSD card and microSD card) |
|                                    | Mobile Terminal Compatibility    | ONVIF <sup>®</sup> Profile  | iPad, iPhone, Android™ terminals<br>G / M / S / T   |
|                                    | Alarm                            | Alarm Source  | 3 terminals input, VMD, Command alarm   |
|                                    | Input/ Output                    | Alarm Actions   | SDXC/SDHC/SD memory recording, E-mail notification, HTTP alarm notification, Indication on browser, TCP alarm notification output   |
|                                    | <b>General</b>                   | Safety  | UL (UL62368-1), c-UL (CSA C22.2 No.62368-1), CE, IEC62368-1   |
| EMC                                |                                  | FCC (Part15 ClassA), ICES003 ClassA, EN55032 ClassB, EN55024, EN55035   |   |
| Power Source and Power Consumption |                                  | DC power supply : DC 12 V 680 mA/Approx. 8.2 W<br>PoE (IEEE802.3af compliant)<br>Device : DC 48 V 180 mA/Approx. 8.6 W (Class 0 device) |   |
| Ambient Operating Temperature      |                                  | -10 °C to +50 °C (14 °F to 122 °F)  |   |
| Ambient Operating Humidity         |                                  | 10% to 90 % (no condensation)   |   |

\*1 Converted value

\*2 When "On (level 30 or 31)" is selected for "Wide Dynamic Range(WDR)", the frame rate is restricted to a maximum of 15fps (30fps mode) or 12.5fps (25fps mode).

\*3 When "Single PTZ" mode is used in wall installations, the 2560×1920 resolution cannot be used.

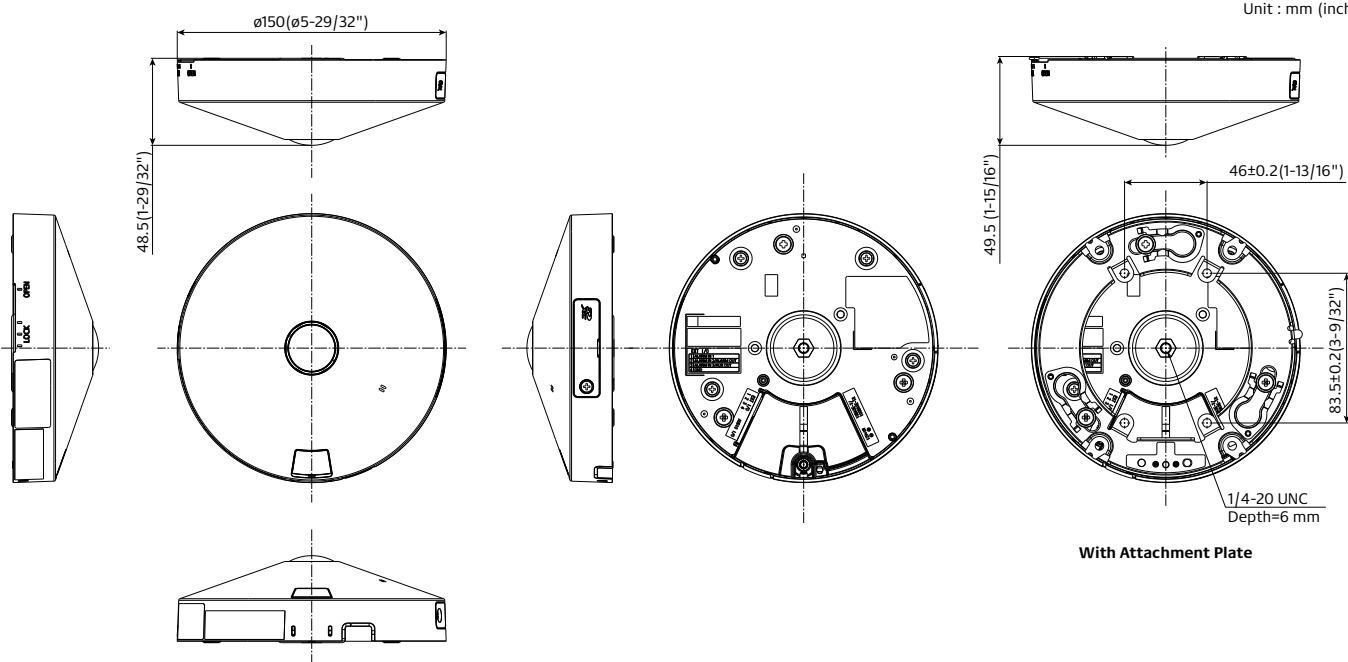
\*4 Transmission for 2 streams can be individually set.

\*5 When recording audio on an SD memory card, only use AAC-LC (Advanced Audio Coding - Low Complexity).

\*6 The audio output can be switched to the monitor output.

Refer to the Operating Instructions on the our support web site for descriptions of how to switch the output.

## Appearance



## Bundled License

### AI-VMD/AI People Counting with the 360-degree fisheye camera

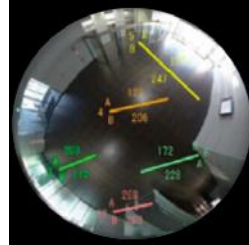
#### AI Video Motion Detection

- AI differentiates between vehicles and people, detecting and sending warning notifications when an intruder enters a specified area.
- Intruder detection:** Issues an alarm when a moving object enters a specified area.
- Cross Line detection:** Issues an alarm when an object moving in the specified direction crosses a specified threshold.
- Loitering detection:** Issues an alarm when a moving object enters a specified area and stays there for a specified amount of time.

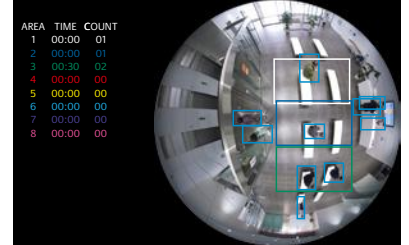


#### People Counting

- Cross Line Counting:** Counts the number of people moving in a specified direction and cross a specified threshold.
- Area Counting (Queue Management):** Counts the number of people in the set area.



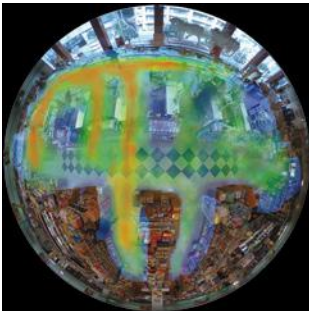
Cross Line Counting



Area Counting

#### Heat map

- Heat mapping provides statistical information about traffic flow and keeps counts for people passing through and loitering in the area.



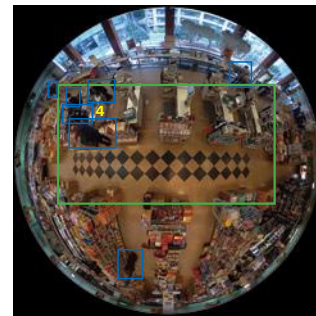
Passing



Loitering

#### Occupancy detection

- The network camera uses its AI engine to detect congestion, providing data that can be used to direct visitor traffic flow in advance or help staff work more efficiently.



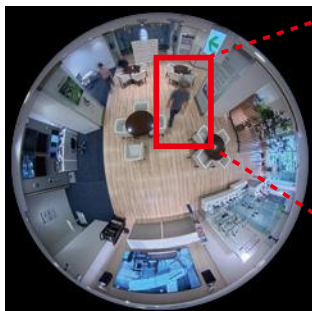
### AI Privacy Guard for 360-degree fisheye

#### AI Privacy Guard

- AI can automatically mosaic faces and figures of people who are photographed to safeguard privacy and portrait rights.



Original image



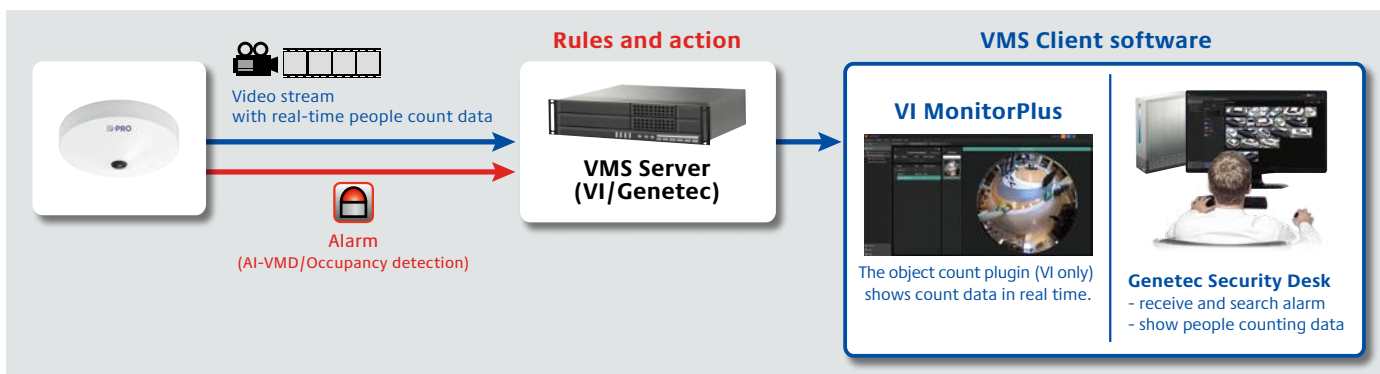
Processed image



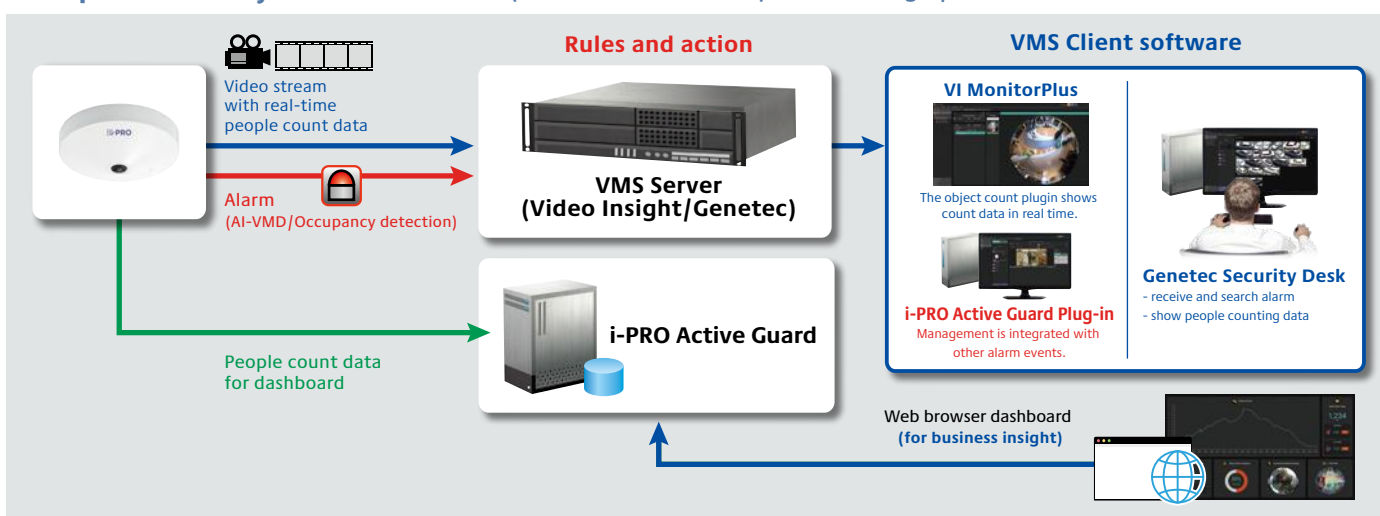
## i-PRO Active Guard

- The i-PRO Active Guard stores the best images and metadata captured by i-PRO network cameras, then collates this data with the watch list registered in the client software and issues an alarm when a match is found. The server does not require expensive hardware because i-PRO network cameras handle the advanced processing. The server can even be installed on the same hardware as the VMS. The system comprises the i-PRO Active Guard, the AI application installed on i-PRO network cameras utilizing AI engines, and i-PRO Active Guard Plug-in software for the VMS client.

### Example of basic system connection (without i-PRO Active Guard)

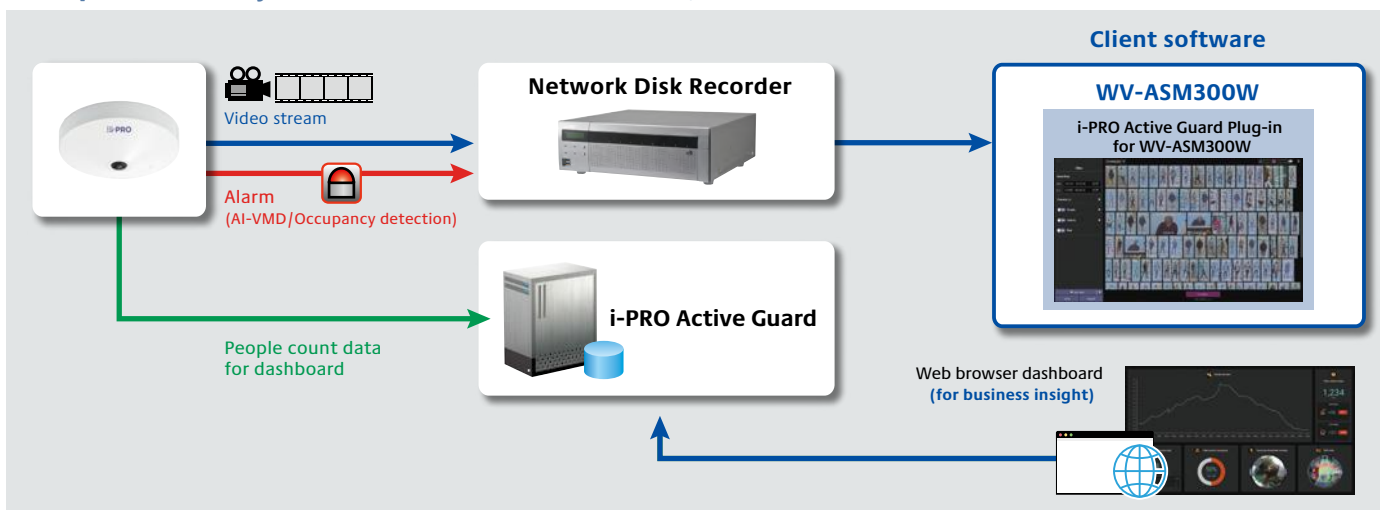


### Example of basic system connection (with i-PRO Active Guard) for Video Insight/Genetec











\*VMS Server and i-PRO Active Guard can be installed on the same server.

### Example of basic system connection for WV-ASM300W/Network disk recorder



## Optional Accessories

### Mount Bracket / Other

|             | WALL   | POLE   | CORNER   | HANGING   | CEILING  |
|-------------|--|--|--|---|--|
| combination | 1<br>Wall Mount Bracket<br><b>WV-QWL500-W</b><br>(i-PRO white)<br>    | 1<br>Pole Mount Bracket<br><b>WV-QPL500-W</b><br>(i-PRO white)<br>                    | 1<br>Corner Mount Bracket<br><b>WV-QCN500-W</b><br>(i-PRO white)<br>                  | 1<br>Ceiling Mount Bracket<br><b>WV-QCL100-W</b> *1<br>(i-PRO white)<br> | 1<br>Ceiling Mount Bracket<br><b>WV-Q105A</b><br> |
|             | Adapter Box<br><b>WV-QJB500-W</b><br>(i-PRO white)<br><br>*If needed. | Wall Mount Bracket<br><b>WV-QWL500-W</b> (i-PRO white)<br>(+ <b>WV-QJB500-W</b> )<br> | Wall Mount Bracket<br><b>WV-QWL500-W</b> (i-PRO white)<br>(+ <b>WV-QJB500-W</b> )<br> | 3rd parties pipe  |  |

\*1: It's possible to be used on the camera side and ceiling side. If used on both side, 2pieces are required.

#### Trademarks and registered trademarks

- iPad and iPhone are trademarks of Apple Inc., registered in the U.S. and other countries.
- Android is a trademark of Google LLC.
- ONVIF is a trademark of ONVIF, Inc.
- All other trademarks identified herein are the property of their respective owners.

#### Important

- Safety Precautions : Carefully read the Basic Information, Installation Guide and Operating Instructions before using this product.
- i-PRO Co., Ltd. cannot be held responsible for the performance of the network and/or other manufacturers' products used on the network.
- Masses and dimensions are approximate. • Specifications are subject to change without notice.